



**PRO-TAKANG**

## ***PRECISION CONVENTIONAL LATHES***

---

Model:

TK450 / 540 / 630

TK770N / 840N

TK1070 / 1270 / 1500

***PRO-TAKANG***

**CNC-TAKANG CO., LTD.  
MANUFACTURER & EXPORTER**

# TK450 / 540

## FEATURES :

Optimal design for excellent turning performance.

High rigidity one piece cast iron base.

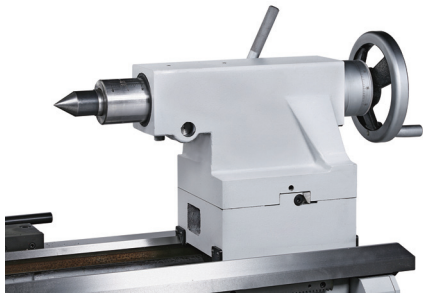
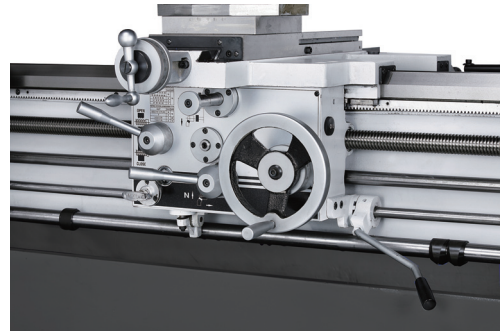


## Headstock

Gears in the headstock are machined from chrome molybdenum alloy steel (SCM-21), carburized and precision ground for extremely smooth and quiet running.

## Apron

Special interlock design at apron to prevent Z axis feed and thread cutting act at the same time.

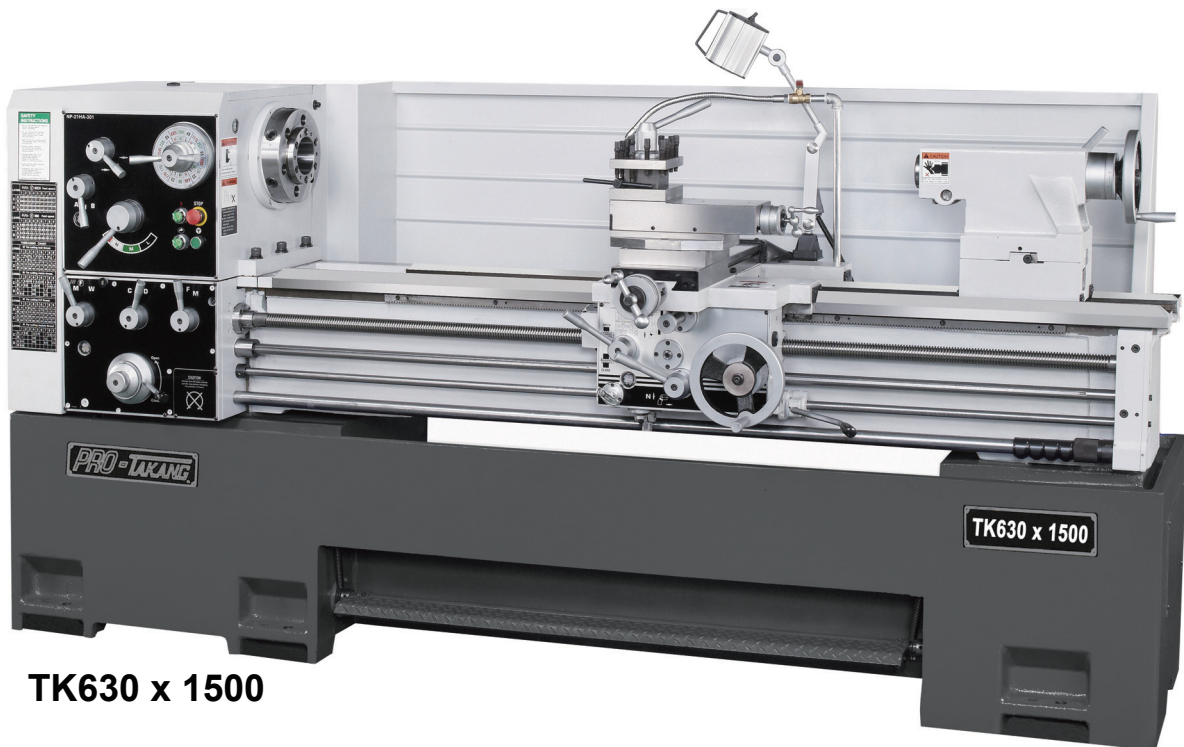


## Tailstock

The tailstock is rigidly constructed, move along the bed easily.

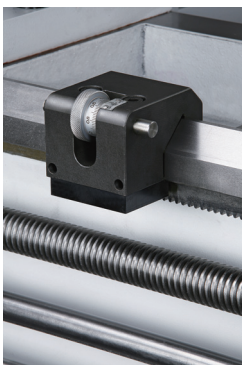


TK450 x 1500

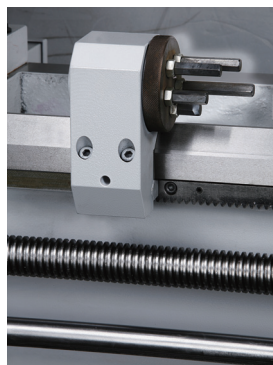


**TK630 x 1500**

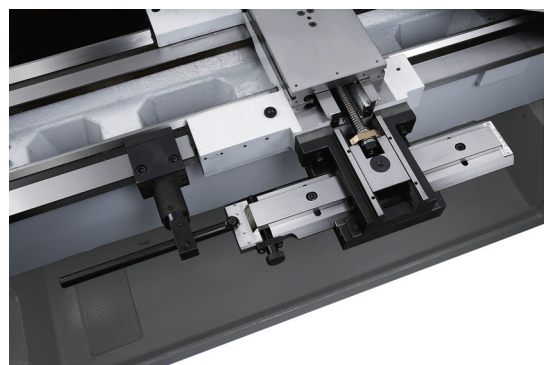
**Options:**



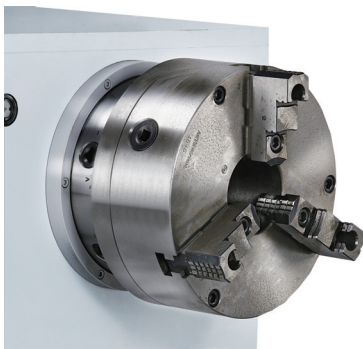
Micro  
bed stop



Turret type 5-position  
bed stop



Taper attachment



3-jaw chuck



4-jaw chuck



Steady rest



Follow rest

# TK770N / 840N

## FEATURES :

Cross & longitudinal rapid travel

Magnetic brake for main spindle



**TK840N x 2100**



Inverter type spindle control: (option)

- 3 steps variable spindle speed.
- Auto gear change with simple switch selection.
- Digital display for spindle speed.
- Quick-stop braking controlled directly by inverter.
- Constant Surface Speed control for face turning.

Spindle bore & spindle speed with inverter (rpm)					
Spindle bore	2.2"	3.3"	4"	6"	9"
TK450	33 - 3100	-	-	-	-
TK540	-	27 - 2250	20 - 1500	-	-
TK630	-	27 - 2250	20 - 1500	10 - 800	-
TK770N	-	-	20 - 1500	10 - 800	-
TK840N	-	-	20 - 1500	10 - 800	6 - 450

## SPECIFICATIONS

DESCRIPTION \ MODEL		TK450	TK540	TK630
CAPACITIES	Swing over bed, mm	460 (18.1")	540 (21")	630 (25")
	Swing over cross slide, mm	290 (11.4")	360 (14")	450 (17.7")
	Swing over gap, mm	640 (25"),Opt	720 (28.3"),Opt	810 (31.9"),Opt
	Between centers, mm	1000 / 1500 / 2000 (40", 60", 80")	1000 / 1500 / 2000 / 3000 (40", 60", 80", 120")	1000 / 1500 / 2000 / 3000 (40", 60", 80", 120")
HEADSTOCK	Spindle bore, mm	56 (2.2")	85 (3.3") 105 (4"),Opt	85 (3.3") 105 (4") / 153 (6"),Opt
	Spindle nose	D1-6	D1-8 / A2-11,Opt	D1-8 / A2-11,Opt
	Spindle speeds, rpm (steps)	39 - 2800 (18)	25 - 1545 (18)	25 - 1545 (18)
	Spindle motor, HP	7.5 / 10,Opt	10 / 15,Opt	10 / 15,Opt
THREADS	Lead screw	4 TPI or 6 mm / pitch		
	Metric / pitch, range	0.5 – 7 mm / pitch (24 kinds)		
	Inch, range	4 – 56 TPI (36 kinds)		
	Module / pitch, range	0.25 - 3.5 M (16 kinds)		
	DP, range	8 – 112 P (36 kinds)		
FEEDING RANGE	Longitudinal feeds, mm/rev.	0.06 - 0.88		
	Cross feeds, mm/rev.	0.03 - 0.44		
TAILSTOCK	Quill dia. / Center taper, mm	75 (2.95") / MT5	75 (2.95") / MT5	75 (2.95") / MT5
	Travel, mm	170 (6.69")	170 (6.69")	170 (6.69")
MISCELLANEOUS	Bed width, mm	350 (13.78")	350 (13.78")	350 (13.78")
	Cross slide travel, mm	280 (11")	305 (12")	330 (13")
	Compound rest travel, mm	120 (4.7")	150 (5.9")	150 (5.9")
	Coolant pump motor, HP	1/8	1/8	1/8
	Packing size, mm	2290 x 1150 x 1600 2790 x 1150 x 1600 3290 x 1150 x 1600	2290 x 1200 x 1700 2790 x 1200 x 1700 3290 x 1200 x 1700 4290 x 1200 x 1700	2290 x 1200 x 1700 2790 x 1200 x 1700 3290 x 1200 x 1700 4290 x 1200 x 1700
	Gross weight, kgs	2000 / 2250 / 2500	2200 / 2350 / 2600 / 2750	2250 / 2400 / 2650 / 2800

※THE SPECIFICATIONS ARE SUBJECT TO CHANGE WITHOUT PRIOR NOTICE.

### ■ STANDARD:

- Center sleeve
- Dead center
- Work light
- Thread chasing dial
- Coolant system
- Tool box with tools
- Manual

### ■ OPTIONS:

- 3-jaw chuck
- 4-jaw chuck
- Face plate
- Bigger spindle motor
- Steady rest
- Follow rest
- Micro bed stop
- Turret type 5 position bed stop
- Quick change tool post
- Taper attachment
- Splash guard
- CE mark
- Inverter & Auto spindle speed (3 steps)
- 105 mm (4") Spindle bore (A2-11, 23-1293 rpm)  
for TK540 / TK630 Series
- 153 mm (6") spindle bore (A2-11, 13-690 rpm)  
for TK630
- Gap bed

## SPECIFICATIONS

DESCRIPTION \ MODEL		TK770N		TK840N		
CAPACITIES	Max. swing over bed, mm	770 (30.3")		840 (33")		
	Center Height, mm	385 (15.2")		420 (16.5")		
	Max. swing over gap, mm	980 (38.5"),Opt		1020 (40.2"),Opt		
	Max. Swing over cross slide, mm	500 (19.7")		570 (22.4")		
	Distance between centers, mm	1600 / 2100 / 3100 / 4100 / 5100 / 6100 (63", 83", 122", 162", 201", 240")		1600 / 2100 / 3100 / 4100 / 5100 / 6100 (63", 83", 122", 162", 201", 240")		
MAIN SPINDLE	Spindle nose	A2-11		A2-11		A2-15
	Spindle bore, mm	105 (4")	153 (6"),Opt	105 (4")	153 (6"),Opt	230 (9"),Opt
	Spindle speeds, rpm (18 steps)	23 - 1293	13 - 690	23 - 1293	13 - 690	5 - 440
CARRIAGE	Cross slide travel	450 (17.7")		450 (17.7")		
	Compound rest travel	250 (9.8")		250 (9.8")		
TAILSTOCK	Tailstock spindle dia.	105 (41.3")		105 (41.3")		
	Tailstock spindle travel	220 (8.7")		220 (8.7")		
	Tailstock spindle taper	MT5		MT5		
BED	Bed width	450 (17.7")		450 (17.7")		
THREADS	Lead screw	2 TPI or 12 mm / pitch				
	Metric pitch threads	0.8 - 14 mm / pitch (65 kinds)				
	Inch threads	2 – 28 TPI (36 kinds)				
	Module pitch thread	0.5 – 7 M (22 kinds)				
	DP threads	4 – 56 P (36 kinds)				
FEEDING RANGE	Longitudinal feeds, mm / rev.	0.05 - 0.70				
	Cross feeds, mm / rev.	0.025 - 0.35				
MOTOR	Main spindle motor, HP	15 / 20,Opt		15 / 20 or 25,Opt		
	Rapid feed motor, HP	1/4		1/4		
	Coolant pump motor, HP	1/8		1/8		
MACHINE WEIGHT	Net weight, kgs	3350 / 3600 / 4100 / 4600 / 5100 / 5700		3450 / 3700 / 4200 / 4700 / 5200 / 5800		

※THE SPECIFICATIONS ARE SUBJECT TO CHANGE WITHOUT PRIOR NOTICE.

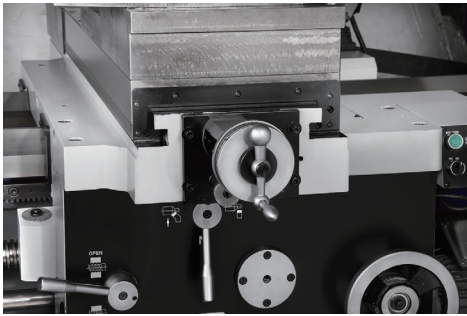
### ■ STANDARD:

1. Center sleeve
2. Dead center
3. Main drive motor
4. Coolant system
5. Work light
6. Tool box with tools
7. Manual

### ■ OPTIONS:

1. 3-Jaw chuck
2. 4-jaw chuck
3. Face plate
4. Steady rest
5. Follow rest
6. Micro bed stop
7. Turret type 5 position bed stop
8. Taper attachment
9. Quick change tool post
10. Work light
11. CE mark
12. Rotating center
13. Splash guard
14. Magnetic brake
15. Gap bed
16. DRO

## FEATURES :

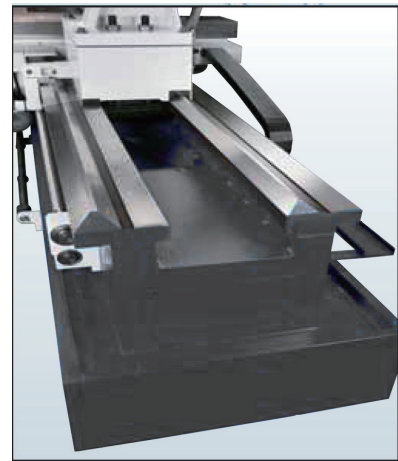


### Box Way on Cross Slide

- The contact surfaces between the cross slide and the Saddle are designed with box ways, which provides greater contact surface.
- This permits heavier cutting capacity, and is also ideal for larger pitch threading.
- Another benefits are longer service life and keeping machine accuracy for much longer time.

### Extra Wide Bed Ways

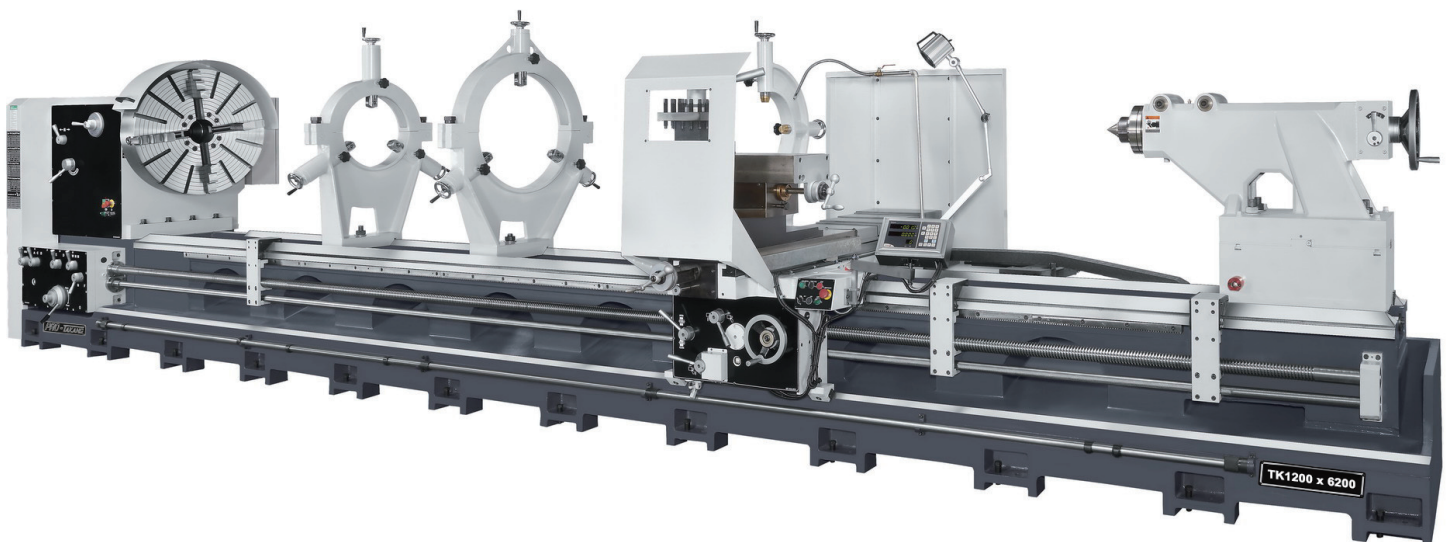
- The bed and base are ruggedly constructed in combination with large span between bedways, that feature maximum rigidity and stability to suit large workpiece machining.



Conventional type



Inverter drive type (i)



## SPECIFICATIONS

DESCRIPTION \ MODEL		TK1070	TK1270	TK1500
CAPACITIES	Swing over bed, mm	1070	1270	1500
	Swing over cross slide, mm	744	944	1100
	Swing over gap, mm	1520	1720	1950
	Between centers, mm	1700 / 2200 / 3200 / 4200 / 5200 / 6200 / 7200 / 8200		
HEADSTOCK	Spindle bore, mm	155 (6") / 230 (9") Opt. / 255 (10") Opt.	155 (6") 230 (9") Opt. / 255 (10") Opt. / 305 (12") Opt.	155 (6") / 230 (9") Opt. / 255 (10") Opt. / 305 (12") Opt.
	Spindle nose	A2-11 (A2-15 Opt.)	A2-11 (A2-15 Opt. / A2-20 Opt.)	A2-11 (A2-15 Opt. / A2-20 Opt.)
	Spindle speeds, rpm (steps)	5 ~ 615 4 ~ 430 (A2-15 Opt.) (18)	5 ~ 615 4 ~ 430 (A2-15 Opt.) / 2 ~ 390 (A2-20 Opt.) (18)	5 ~ 615 4 ~ 430 (A2-15 Opt.) / 2 ~ 3 90 (A2-20 Opt.) (18)
	Spindle motor, HP	20, 25 (30 Opt.)		
THREADS	Lead screw	12 mm / pitch (2 TPI)		
	Metric / pitch, range	1 - 30 mm		
	Inch, range	1 ~ 30 TPI		
	Module / pitch, range)	0.5 - 15 M		
	DP, range (numbers)	2 ~ 60 TPI		
FEEDING RANGE	Longitudinal feeds mm / rev.	0.07 - 2.03		
	Cross feeds, mm/rev.	0.028 - 0.81		
TAILSTOCK	Quill dia. / Center taper, mm	165		
	Travel, mm	300		
MISCELLANEOUS	Bed width, mm	625		
	Cross slide travel, mm	700		
	Compound rest travel, mm	380		
	Coolant pump motor, HP	1/6		
	Gross weight, kgs	6600 / 7000 / 7800 / 8600 / 9200 / 10000 / 10800 / 11600	6900 / 7300 / 8100 / 8900 / 9700 / 10500 / 11300 / 12100	7400 / 7800 / 8600 / 9400 / 10200 / 11000 / 11800 / 12600

※THE SPECIFICATIONS ARE SUBJECT TO CHANGE WITHOUT PRIOR NOTICE.

### ■ STANDARD:

1. 4 way tool post
2. Six position rapid travel
3. Tailstock
4. Coolant system
5. Tool box with tools

### ■ OPTIONS:

1. 3-jaw chuck
2. 4-jaw chuck
3. Steady rest
4. Follow rest
5. Quick change tool post
6. Rear chuck adaptor
7. Taper attachment
8. CE mark
9. Gap bed

## CNC-TAKANG CO., LTD.

No. 72, Alley 7, Lane 98, 1st Road, Taichung Industry Park,  
Taichung 40767, TAIWAN  
FAX: +886-4-2359 6064 E-mail: takang@ms17.hinet.net  
TEL: (04)2359 6056 Web site: www.cnctakang.com.tw