



HEAVY DUTY CNC LATHES

LB40 x 1200

FLAT BED

SPECIAL MADE FOR OIL INDUSTRY

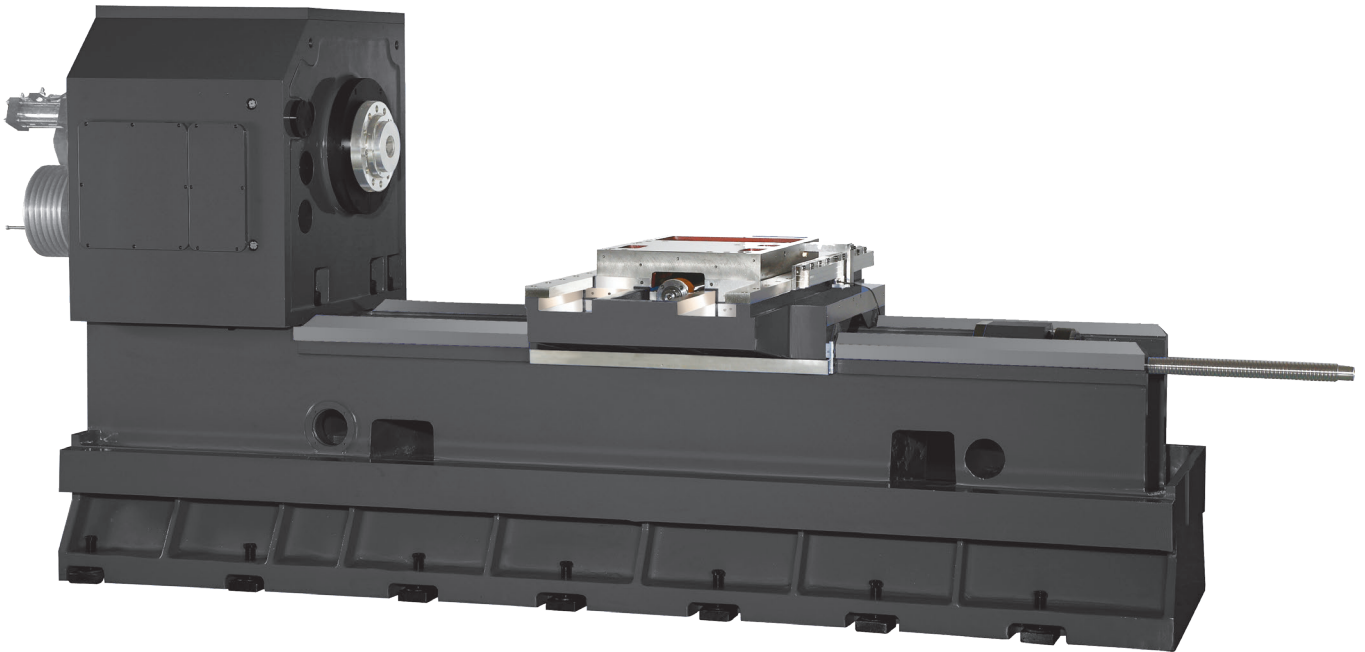
CNC-TAKANG

**CNC-TAKANG CO., LTD.
MANUFACTURER & EXPORTER**

TURNING MASTER

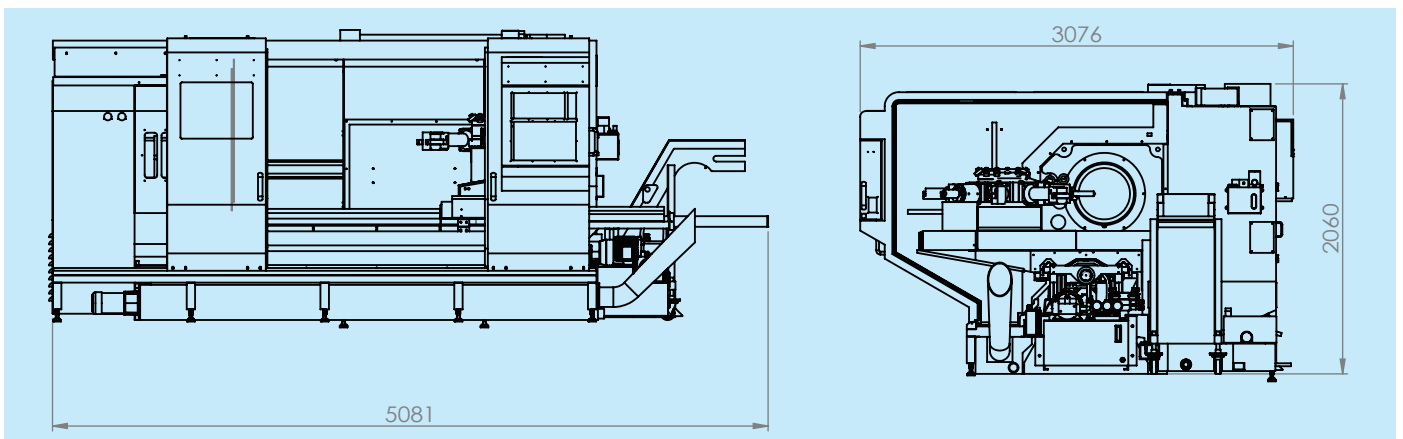
FEATURES

1. Full torque output at 11rpm spindle speed.
2. Solid box- construction casting headstock.
3. Spindle speed ranges are auto changed by M code.
4. Infinitely variable speeds are commanded by S code.
5. Z axis transmission at the center of saddle, with speed reducer for extra torque output.
6. Extra wide saddle, super rigidity for interrupt and heavy turning.
7. Extra wide chip evacuate space for easier chip removal.
8. Multi function turret and tool holder for various disk parts machining.
9. Specialized design for oil pipes & other oil industry components turning.



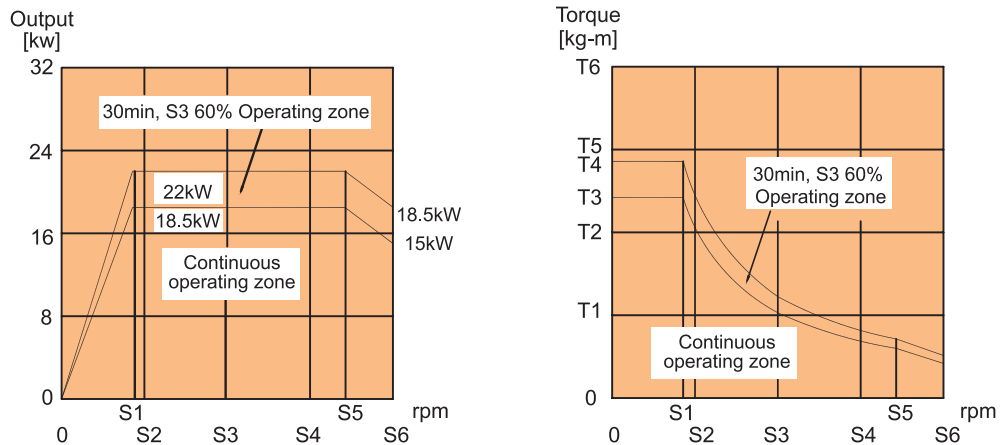
■ DIMENSION (Unit: mm)

LB40x1200 Series



■ SPINDLE TORQUE - POWER DIAGRAM

FANUC α 18/7000i Motor

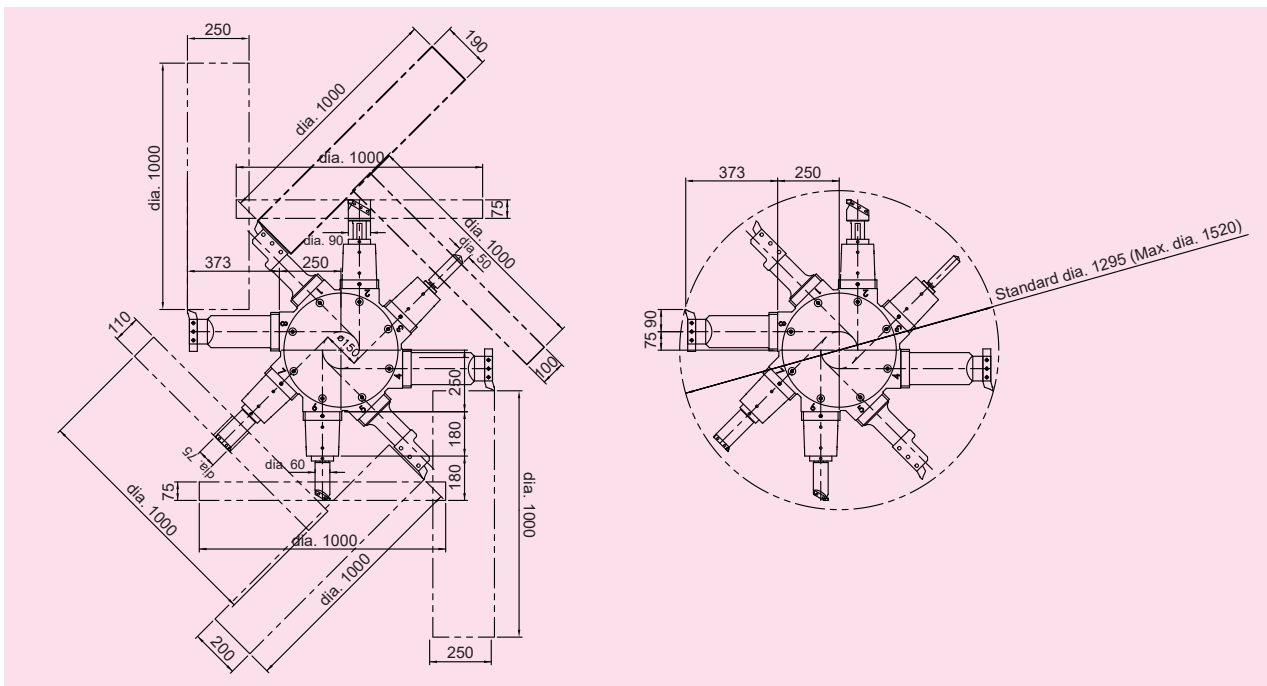


	Speed [rpm]						Torque [kg-m]					
	S1	S2	S3	S4	S5	S6	T1	T2	T3	T4	T5	T6
Motor	1500	1750	3500	5250	6000	7000	5	10	12.01	14.29	15	20
Spindle M41i = 0.0075	11	13	26	39	45	53	667	1333	1601	1904	2000	2667
Spindle M42i = 0.0165	25	29	58	87	99	116	303	606	728	865	909	1212
Spindle M43i = 0.045	68	79	158	236	270	315	111	222	266	317	333	444
Spindle M44i = 0.1005	151	176	352	528	603	704	50	100	119	142	150	200

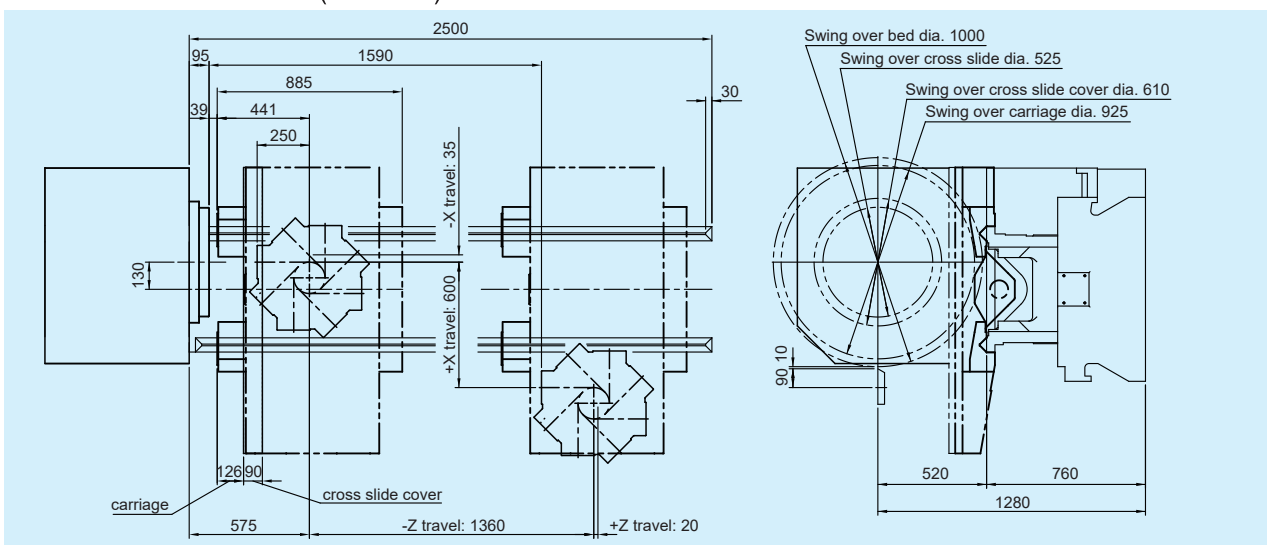


LB40x1200

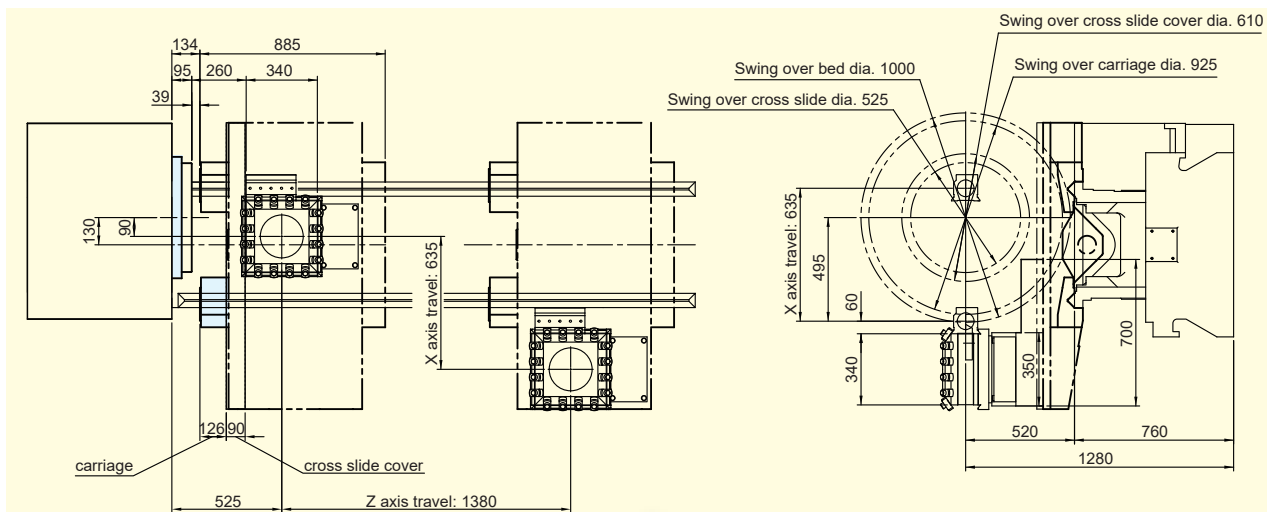
■ TURRET INTERFERENCE (Unit: mm)



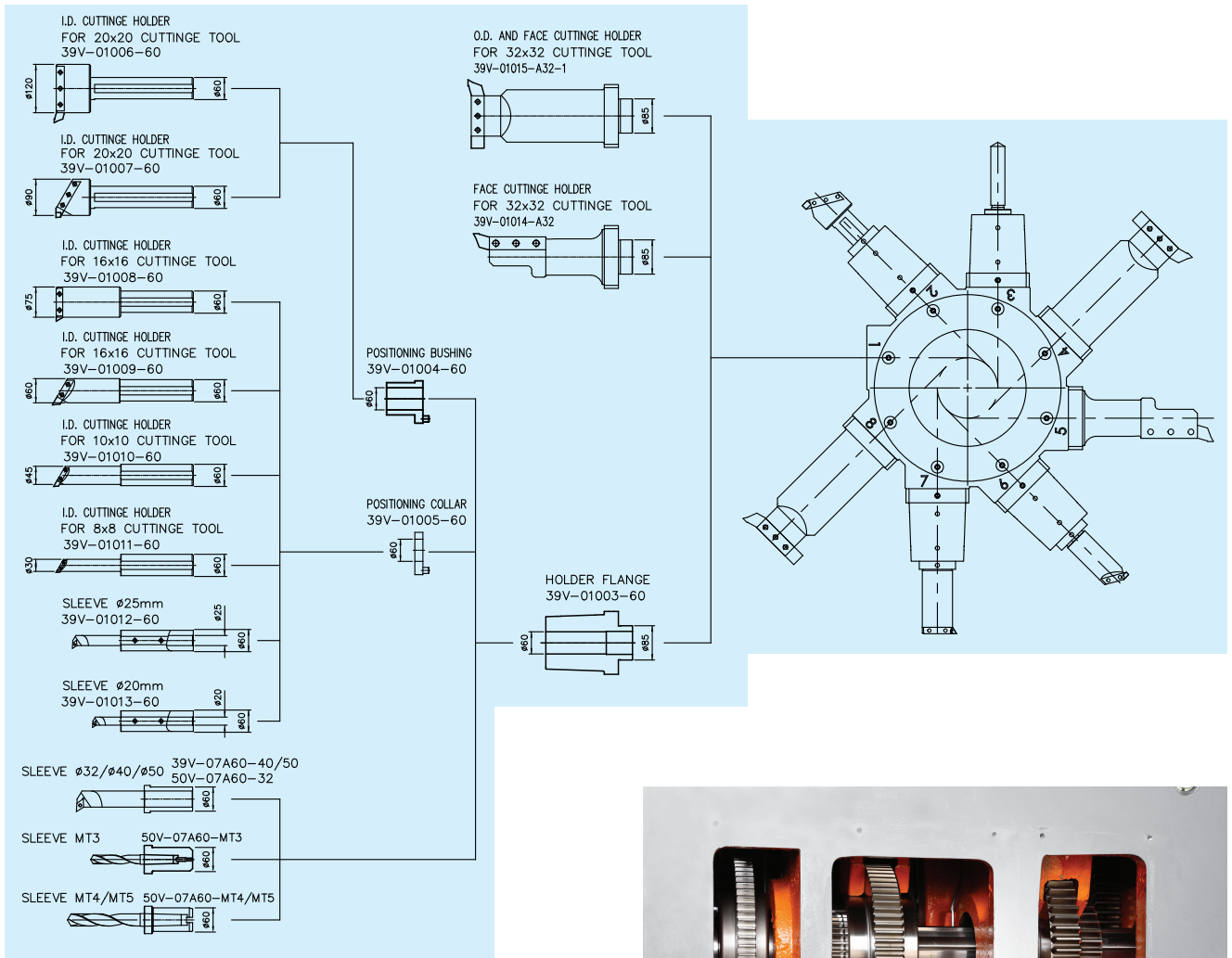
■ WORK RANGE (Unit: mm)



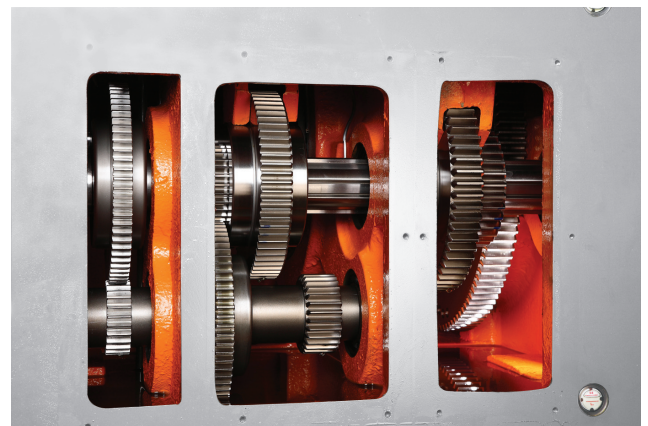
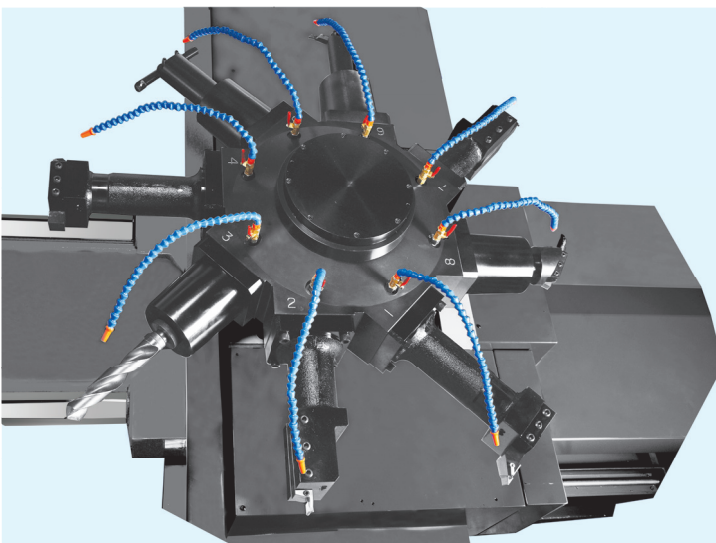
HP-350 VDI (H4)



■ H8 TOOLING SYSTEM (Unit: mm)



H8 Turret



High ratio gear transmission presents high torque at low speed.

Spindle transmission presents high torque turning with limited horse power.

SPECIFICATIONS

MODEL	DESCRIPTION	LB40x1200
Capacity	Swing over bed	1000mm (39.3")
	Center height	520mm (20.4")
	Bed width	600mm (23.6")
Spindle	Spindel nose	A2-11 (6") A2-15 (9") A2-20 (12") A2-20 (14.5")
	Spindle speeds	11-600rpm 11-450rpm 11-400rpm 11-300rpm
	Spindle center	MT6
	Width of cross slide	525mm (20.7") For H4 Turret
	Width of carriage	885mm (34.8")
Turret	Turret	H6, H8-450 servo or H4-350 Hydraulic
	Tool size	32 x 32mm (1.25" x 1.25")
	X axis travel	635mm (25")
	Z axis travel	1360m (53.5")
	X axis rapid travel	6M / min (ø40mm * p5)
	Z axis rapid travel	6M / min (ø50mm * p10)
Motor	X axis servo motor	Fanuc α 22i 4kw
	Z axis servo motor	Fanuc α 22i 4kw
	Spindle motor	Fanuc α 18i 18.5 / 22kw (OPT α 30i 30 / 37kw, α 22i 22 / 26kw)
	Lubricant pump motor	25w
	Coolant pump motor	0.845kw
	Hydraulic pump motor	2.25kw
Machine weight		10500kgs

※THE SPECIFICATIONS ARE SUBJECT TO CHANGE WITHOUT PRIOR NOTICE.

■ STANDARD ACCESSORIES:

1. Fanuc control, motor & 6" spindle bore
2. Auto coolant, hydraulic & lubrication system
3. Box way on cross slide
4. Splash guard
5. Work light
6. Chain type chip conveyor
7. Tool box with tools
8. Manual
9. H4 turret

■ OPTIONS:

1. Extra spindle bore, motor & speeds
2. Spindle oil chiller
3. Chucks, Rear chuck adapter & Face plate
4. C axis or Spindle 5° indexing or 15° orientation
5. Driving tool turret
6. Driving toolholders
7. Special boring bar toolholder
8. Higher coolant pressure
9. Tool presetter
10. Other controller
11. Steady rest
12. Heavy duty milling attachment
13. Transformer (power supply except 220V)
14. CE mark
15. H6 or H8 turret

CNC-TAKANG CO., LTD.

No. 72, Alley 7, Lane 98, 1st Road, Taichung Industry Park,
Taichung 40767, TAIWAN
FAX: +886-4-2359 6064 E-mail: takang@ms17.hinet.net
TEL: (04)2359 6056 Web site: www.cnctakang.com.tw