



## ***PRECISION CNC AUTO LATHE***

---

Model : PC - 32

WITH **PC-BASED** CONTROLLER

- *EASY OPERATION*
- *SPEEDY, ECONOMIC*

***CNC-TAKANG***

**CNC-TAKANG CO., LTD.**  
**MANUFACTURER & EXPORTER**

**2  
3  
-  
C  
E**

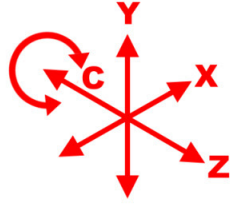
# PC-32 Series

## FEATURES :

X,Z axes servo motor  
Max. rapid feed rate is 30 M/min.

Servo motor driven spindle  
includes C axis function  
Max. 4000 rpm.  
(Opt. 6000 rpm)

High rigidity  
linear guide ways provide  
stable, rapid and precise feeds.

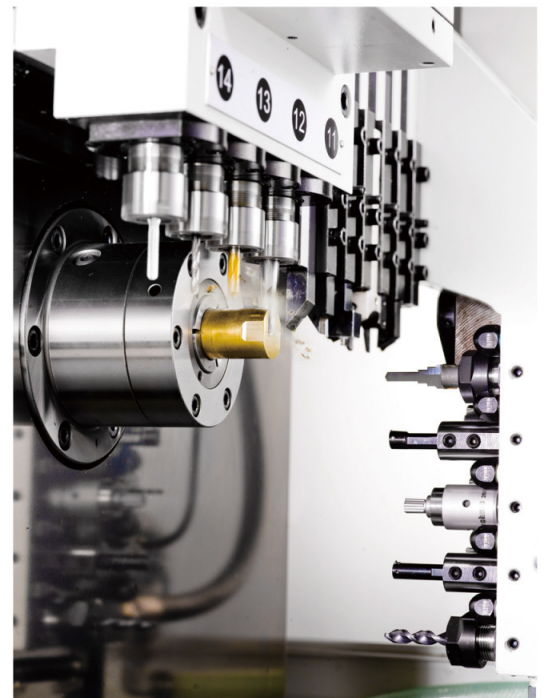
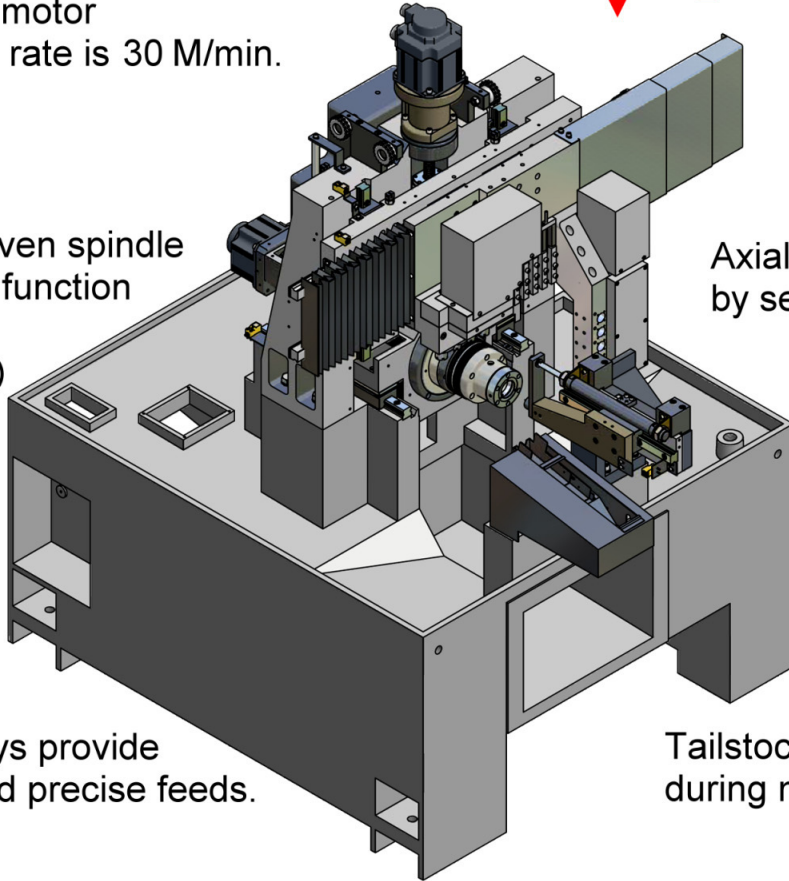


Hydraulic cylinder  
provides high speed  
and stable clamping.

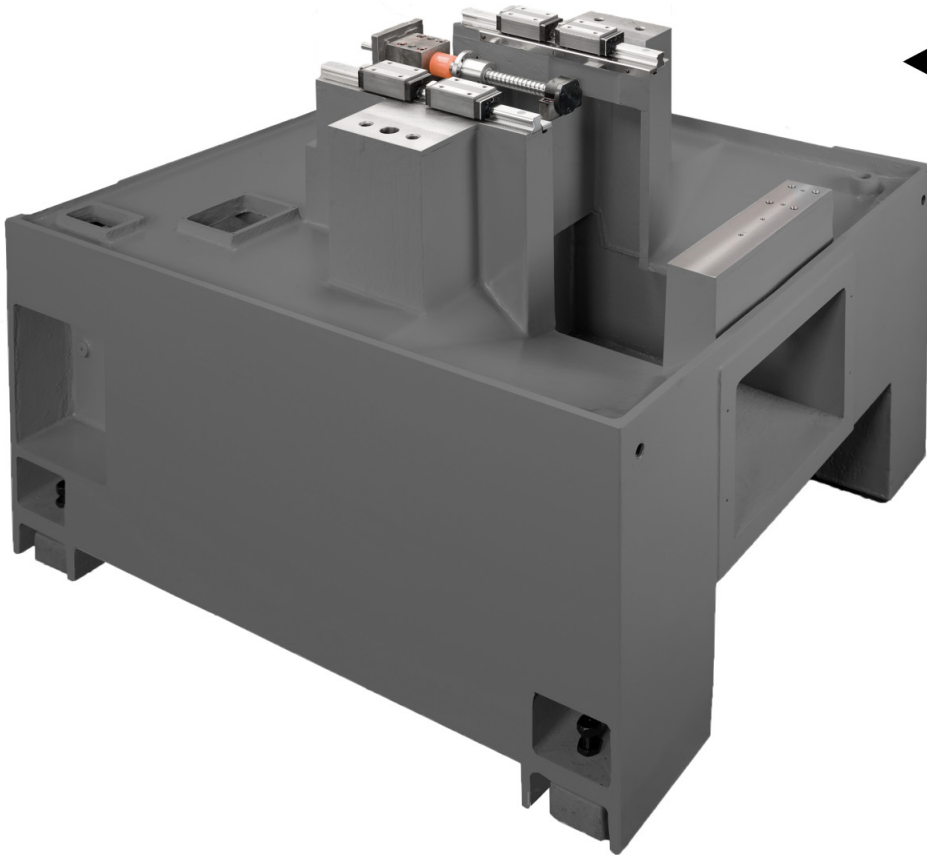
Axial & radial driving tools  
by servo motor Max. 4000 rpm.

Machine body made  
from one piece  
solid cast iron.  
High rigidity and stability.

Tailstock can support longer parts  
during machining.



**FEATURES :**



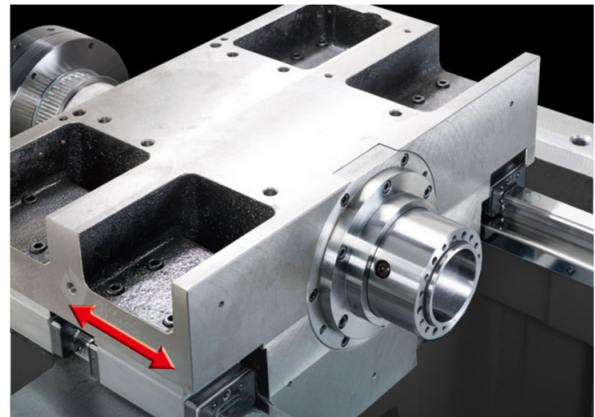
◀ **Rock-Solide Base**

The massive base is manufactured from high quality cast iron (FC-30), tempered and stress relieved to ensure material stability year after year.

The one-piece fabricated base combined with rib reinforcement offer a solid support for the machine.

▶ **Sliding Head without Guide Bush**

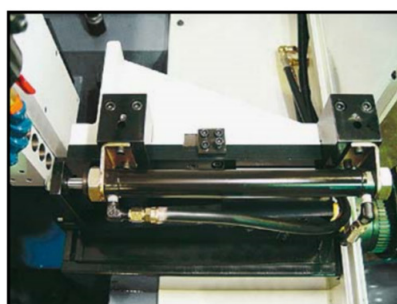
Spindle head moves on two precision linear ways combined with extra large span between ways, exhibiting outstanding stability and high positioning accuracy.



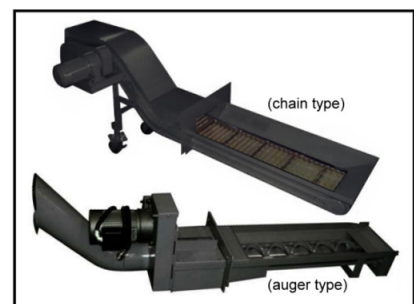
▼ **PC-based controller**



▼ **Tailstock (Opt.)**



▼ **Chip conveyor**



**SPECIFICATIONS**

Model	Description	PC-32
Spindle	Max. cutting dia. (mm)	Dia. 36
	Spindle Max. rpm	6000
	X axis travel (mm)	190
	Y axis travel (mm)	490
	Z axis travel (mm)	165
	Max. bar feeder dia. (mm)	Dia. 36
	Collet chuck	TRB-36
	Rapid travel speed (M / min)	30 (X / Y / Z)
	Spindle servo motor (kw)	7.5
	Min. input unit (mm)	0.001
	Center height (mm)	1015
Turret	No. of O.D. turning tool	6 (Opt. 5)
	O.D. turning tool size (mm)	12 (Opt. 16)
	No. of I.D. turning tool	5
	I.D. turning tool size	Dia. 25
	Axis servo motor (kw)	1.3 (X), 0.85 (Y / Z)
	No. of radial driving tool	4
	Radial driving tool size	ER 20
	Radial driving tool servo motor (kw)	1
	Radial driving tool Max. rpm	6000
	No. of axial driving tool	3
	Axial driving tool size	ER 20
	Axial driving tool servo motor (kw)	0.75 kw
	Axial driving tool Max. rpm	6000
Miscellaneous	Coolant pump motor (HP)	1
	Machine size (L x W x H mm)	2442 x 1954 x 1722
	Net weight (kgs)	3100

※THE SPECIFICATIONS ARE SUBJECT TO CHANGE WITHOUT PRIOR NOTICE.

**STANDARD ACCESSORIES :**

1. Syntec PC-based controller
2. Collet chuck
3. Parts catcher
4. Cutting fluid device
5. Tool box with tools
6. Bar feeder interface
7. Drilling shaft ER20 x 5
8. Hydraulic cylinders stroke inspection device
9. Cutting fluid inspection device
10. Auto power breaker
11. Operation manual

**OPTIONS :**

1. Tailstock
2. Air-blowing device
3. Chain type chip conveyor
4. Auger type chip conveyor
5. Voltage stabilizer / Transformer
6. CE mark

**CNC-TAKANG CO., LTD.**

No. 72, Alley 7, Lane 98, 1st Road, Taichung Industry Park,  
 Taichung 40767, TAIWAN  
 FAX: +886-4-2359 6064 E-mail: takang@ms17.hinet.net  
 TEL: (04)2359 6056 Web site: www.cnctakang.com.tw